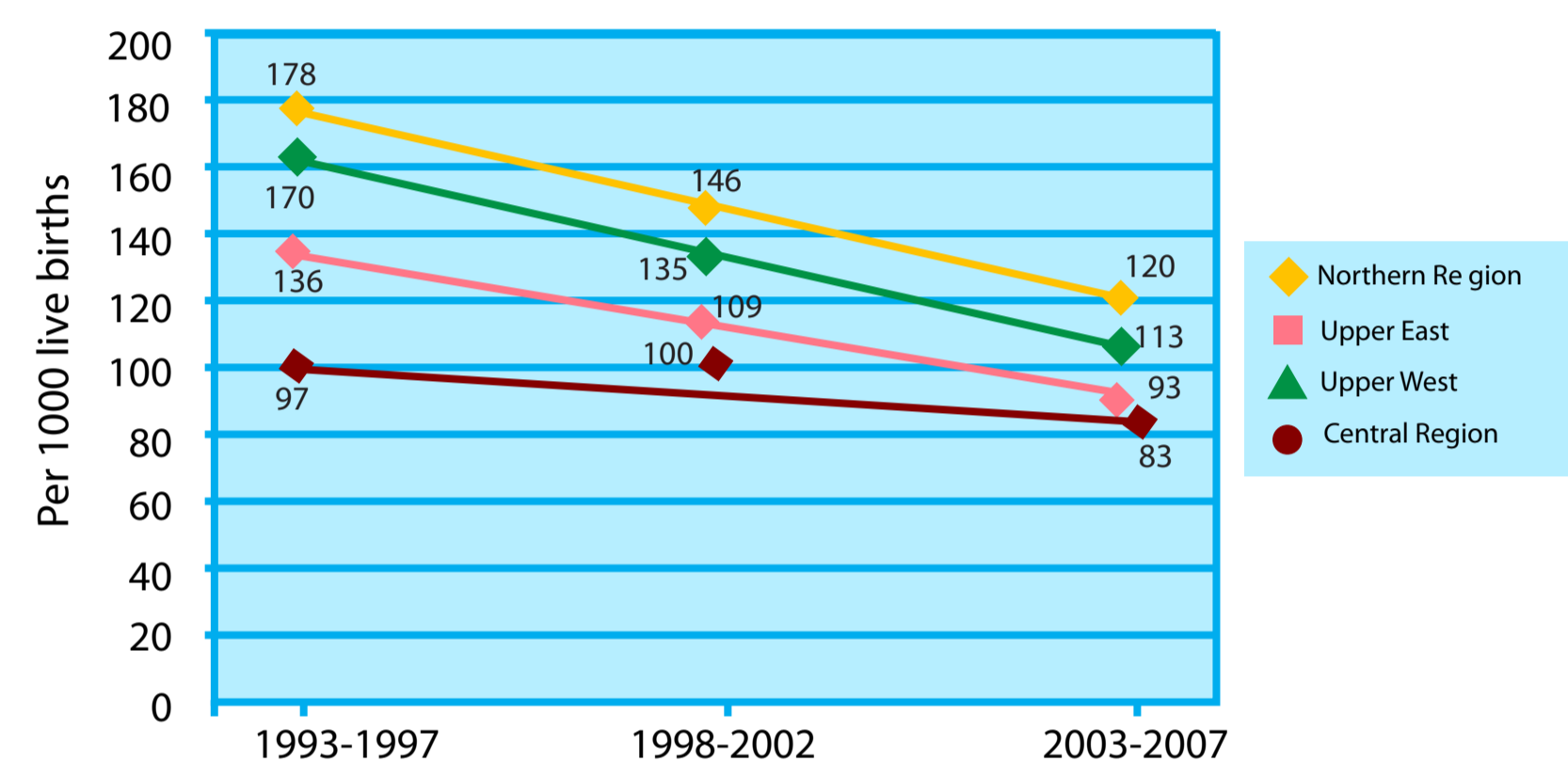


Child Mortality

TRENDS IN < 5 MORTALITY 1995 - 2005

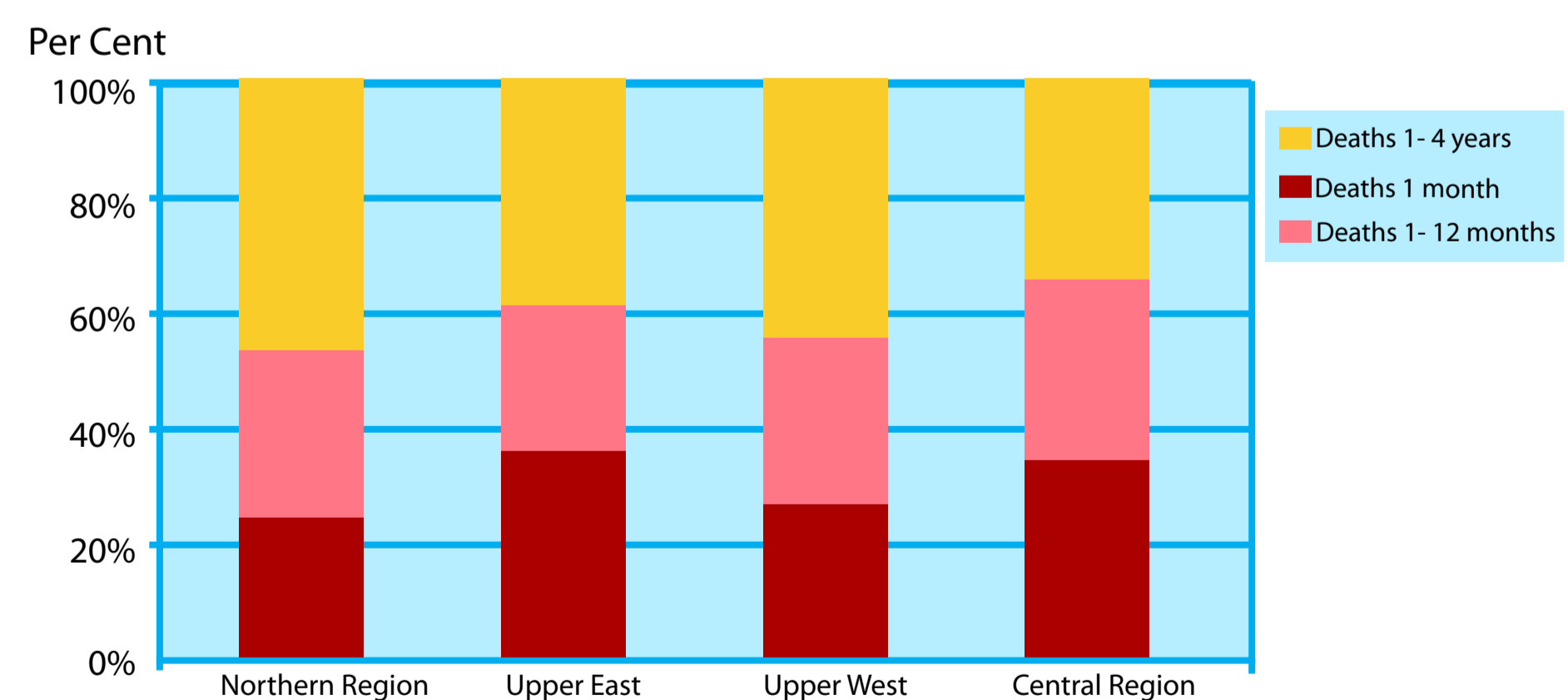


*Trendline based on MICS 2007 data

There have been significant reductions in the number of children that die before their fifth birthday in all four regions

< 5, INFANT & NEONATAL MORTALITY

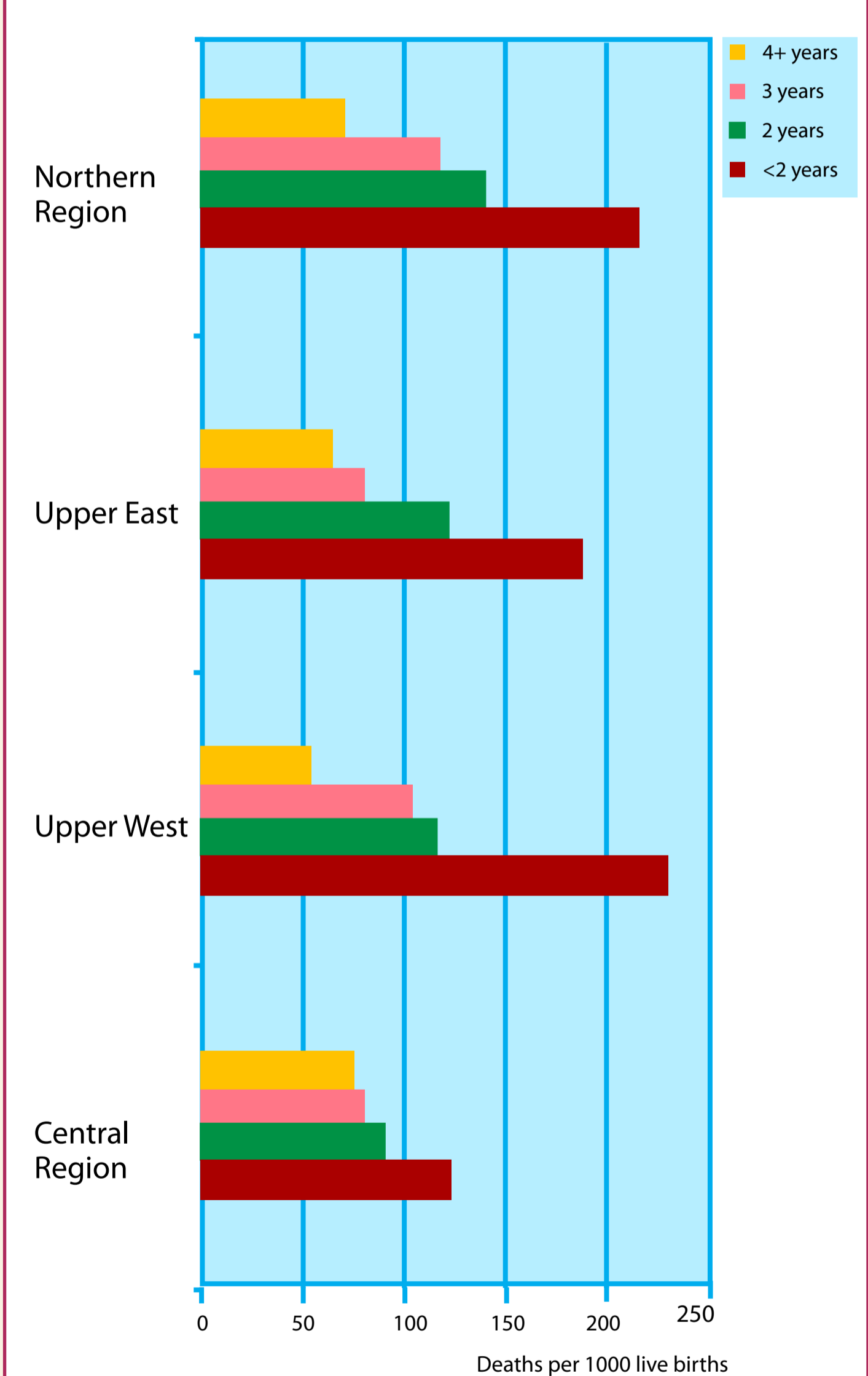
< 5 mortality by 1st month (neonatal mortality) and first year (infant mortality)



Of the children that die before their fifth birthday, more than 20% die in the first month and 60% in the first year.

BIRTH SPACING

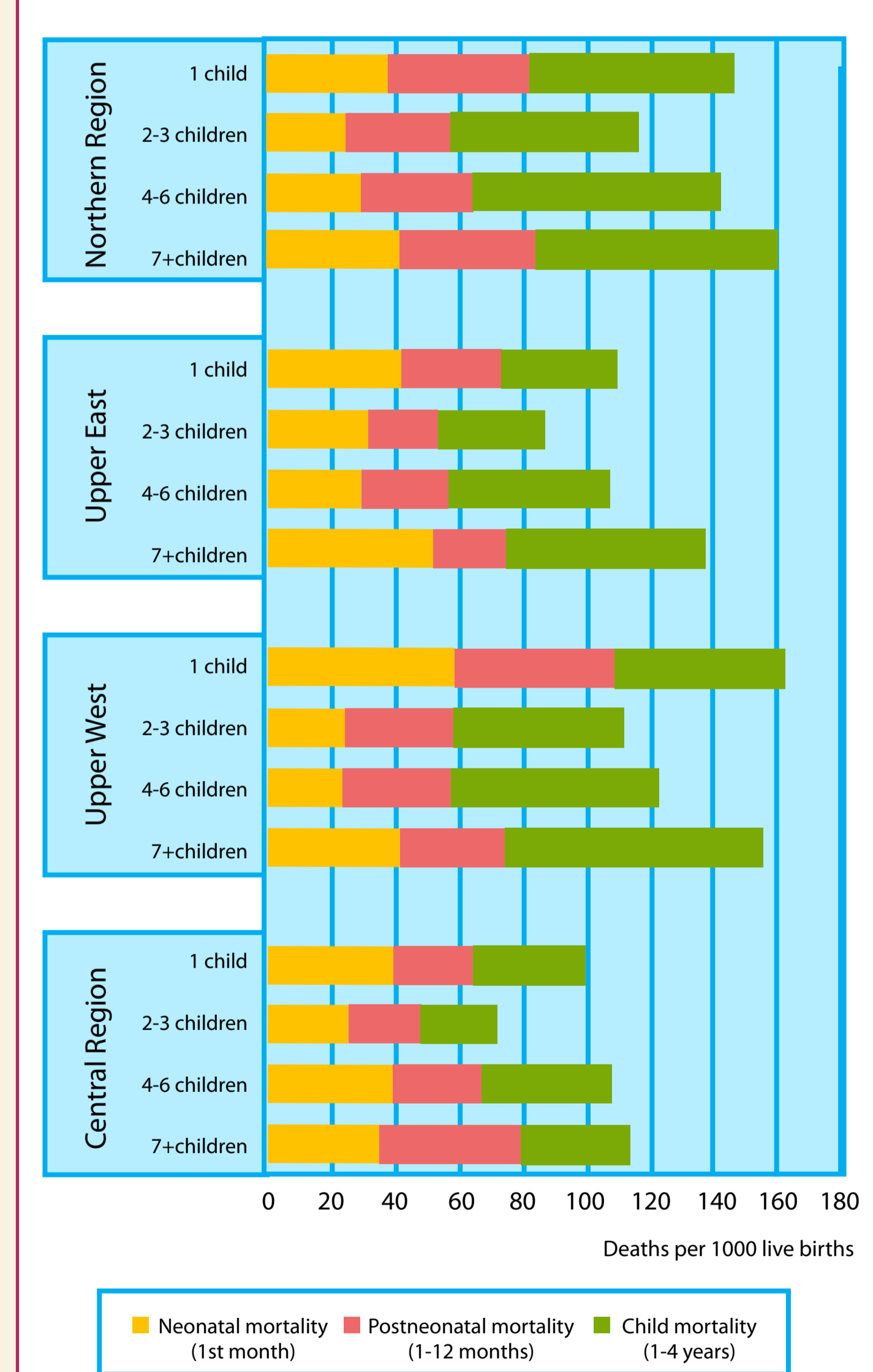
< 5 mortality by time interval to previous birth



Children are much more likely to die before their fifth birthday when the time interval to previous birth is less than two years.

BIRTH ORDER

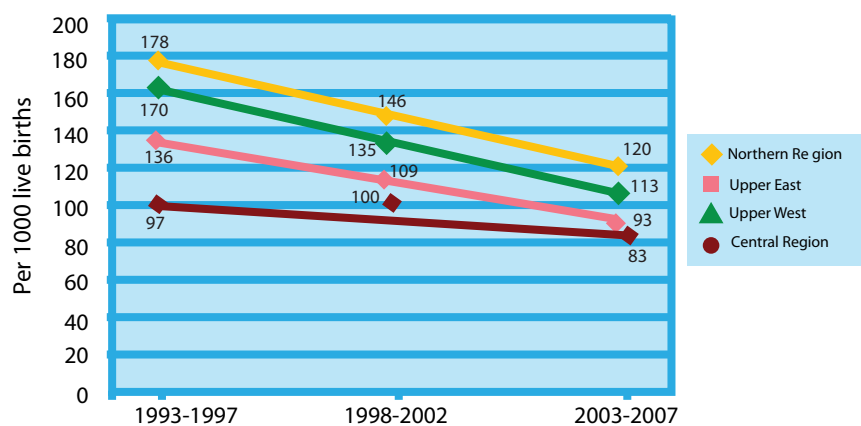
< 5, infant & neonatal mortality by birth order



Mortality increases when women have more than 2-3 children.

Child Mortality

TRENDS IN < 5 MORTALITY 1995 - 2005

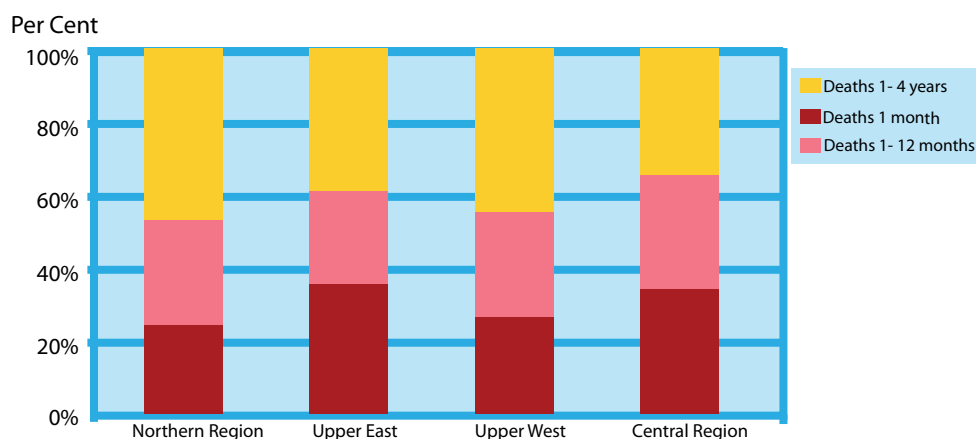


*Trendline based on MICS 2007 data

There have been significant reductions in the number of children that die before their fifth birthday in all four regions

< 5, INFANT & NEONATAL MORTALITY

< 5 mortality by 1st month (neonatal mortality) and first year (infant mortality)

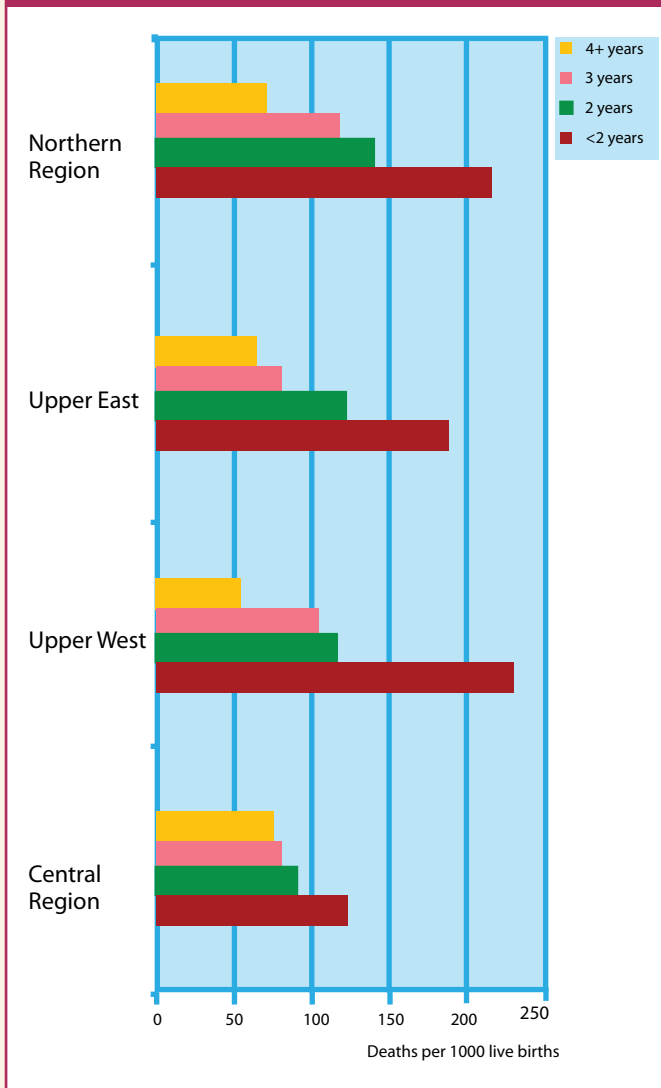


Of the children that die before their fifth birthday, more than 20% die in the first month and 60% in the first year.



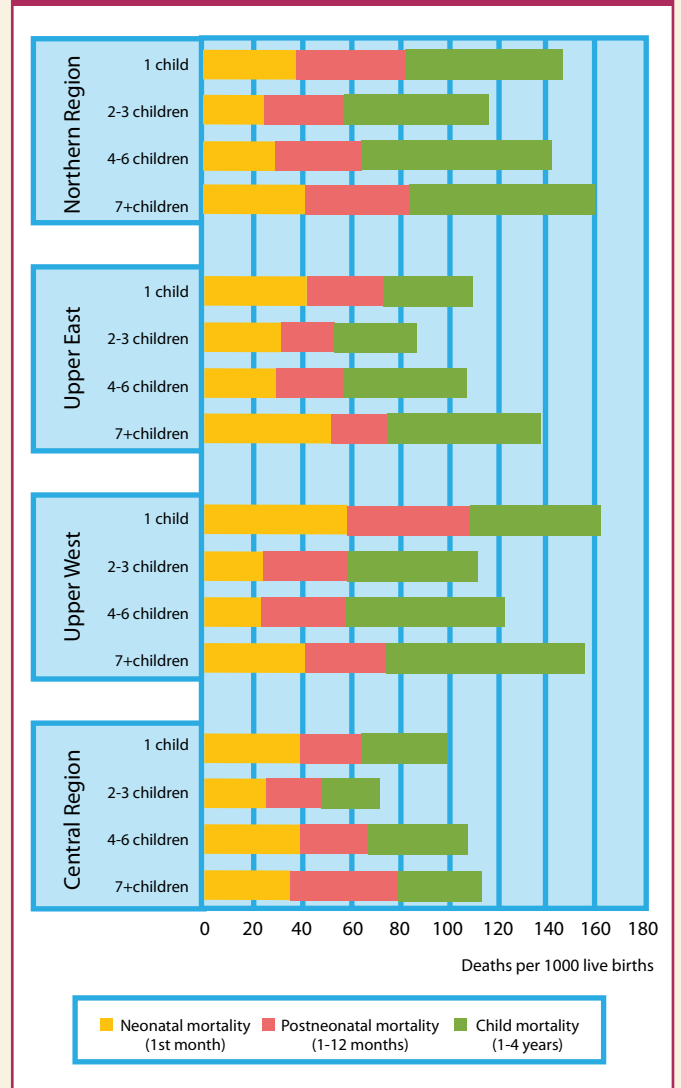
BIRTH SPACING

< 5 mortality by time interval to previous birth



BIRTH ORDER

< 5, infant & neonatal mortality by birth order



Children are much more likely to die before their fifth birthday when the time interval to previous birth is less than two years.

Mortality increases when women have more than 2-3 children.