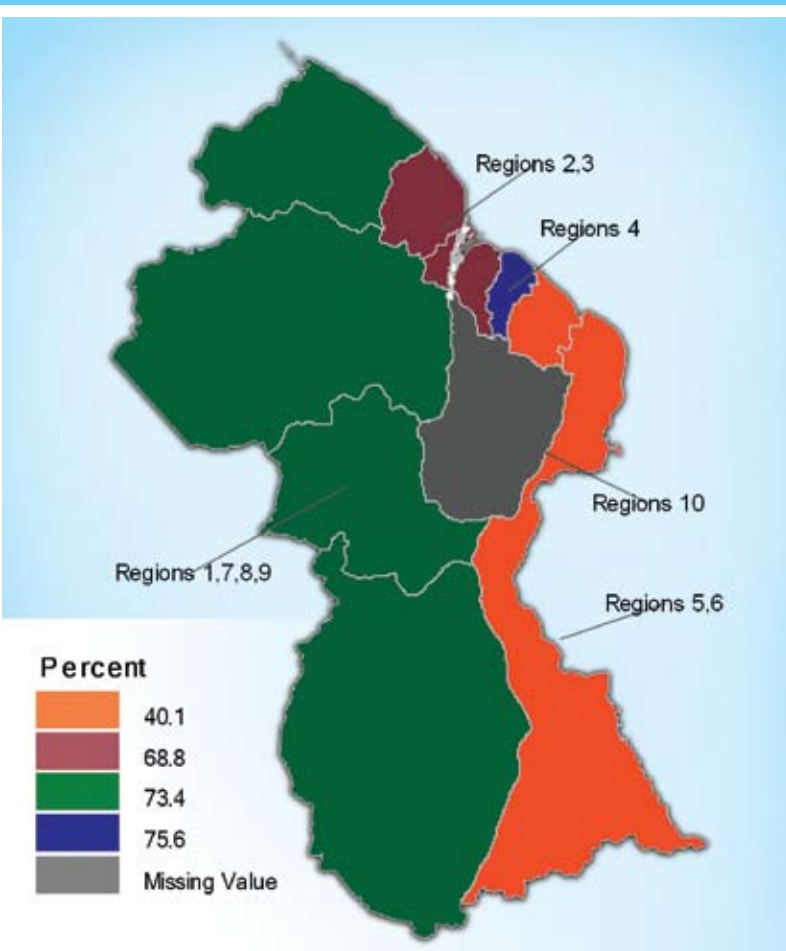




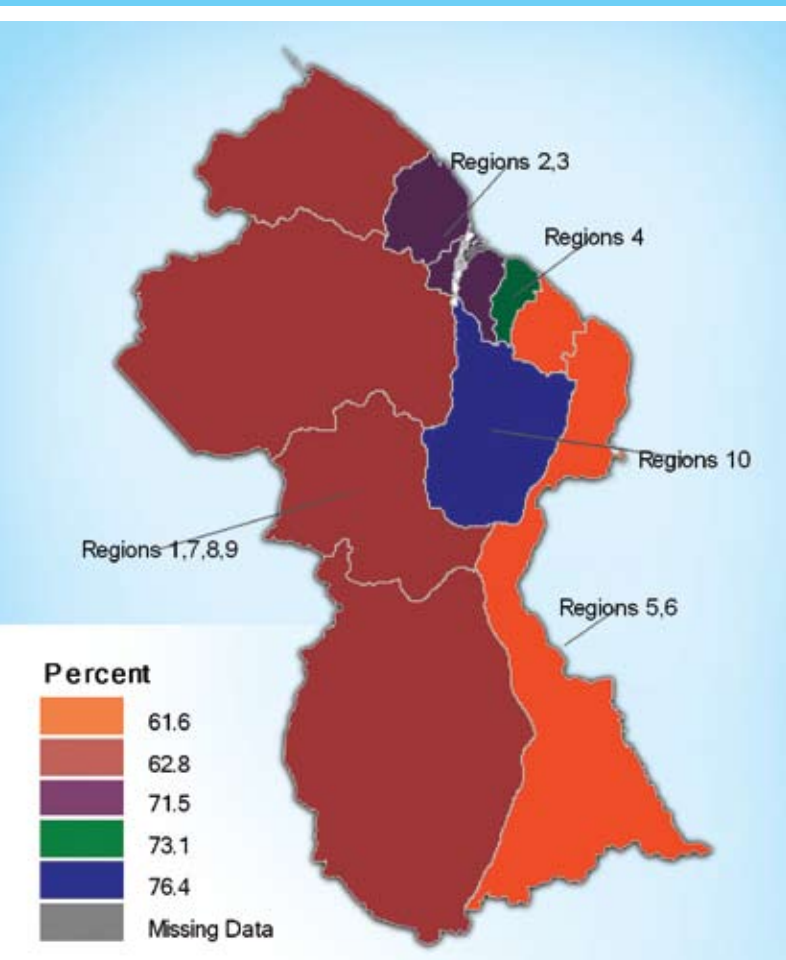
# EDUCATION

## Guyana 2006 Multiple Indicator Cluster Survey (MICS)

PRIMARY SCHOOL COMPLETION RATE AND TRANSITION RATE TO SECONDARY SCHOOL



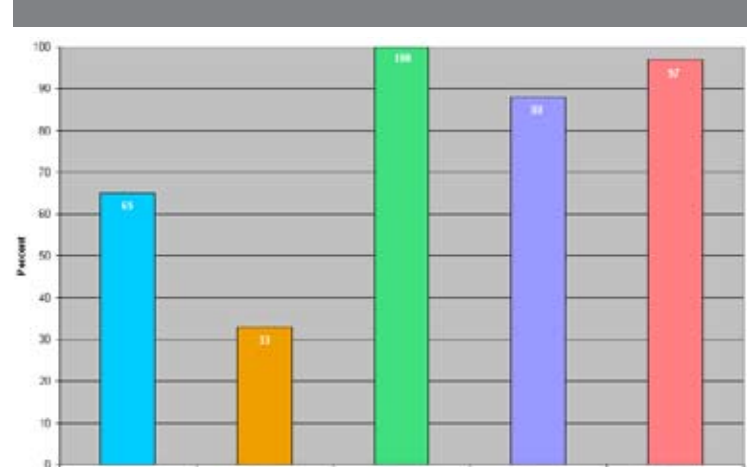
PERCENTAGE OF CHILDREN OF SECONDARY SCHOOL AGE ATTENDING SECONDARY SCHOOL



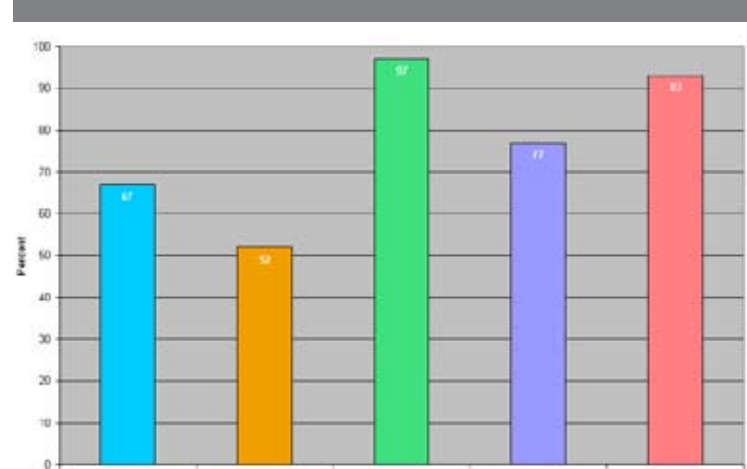
TOPIC	INDICATOR	URBAN COASTAL	RURAL COASTAL	INTERIOR	TOTAL
Child Development	Household support for learning with 4 or more activities per week	86.0	86.0	65.8	82.3
	Children aged 0-59 months whose father engaged in one or more activities to promote learning and school readiness in the past 3 days before the survey	44.0	55.1	49.0	51.2
	3 or more children's books in home	73.5	54.0	29.8	54.4
	3 or more non-children's books in home	67.5	55.2	40.0	55.4
	3 or more materials for play in home	38.1	42.0	36.4	40.0
	Left in home without adult supervision	5.1	11.5	19.2	11.3
Education	Number of children in first grade that were enrolled in some form of pre-school the previous year	64.8	62.5	74.4	65.0
	Number of children of school-entry age that are currently attending first grade	85.1	77.1	72.7	78.7
	Enrolment rate in primary school	97.9	95.7	95.0	96.2
	Completing primary school	84.8	65.6	69.9	71.4
	Completing primary school and transitioning to secondary school	80.3	58.8	71.0	67.0
	Enrolment rate in secondary school	78.4	66.7	63.0	69.4
	Proportion of children entering the first grade of primary school that eventually reach grade five (Primary 3)	98.9	95.6	98.4	96.8
	Ratio of boys to girls in primary school	0.99	1.00	1.00	1.00
	Ratio of boys to girls in secondary school	1.08	1.11	1.04	1.10

All values are related to children and in percentages except the gender parity figures which are ratios of boys to girls.

PERCENTAGE OF CHILDREN IN FIRST GRADE THAT WERE ENROLLED IN PRE-SCHOOL THE PREVIOUS YEAR



PRIMARY SCHOOL COMPLETION RATE AND TRANSITION RATE TO SECONDARY SCHOOL



RATIO OF BOYS TO GIRLS IN SECONDARY SCHOOL

